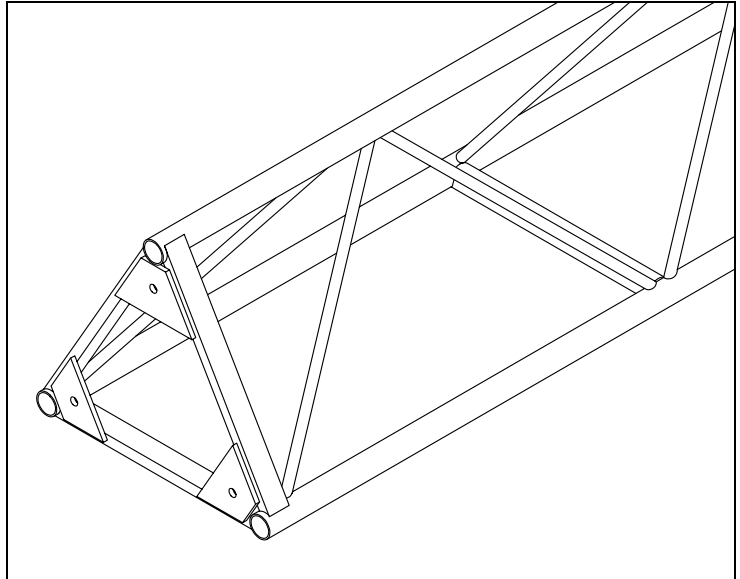


**ENGINEERING**

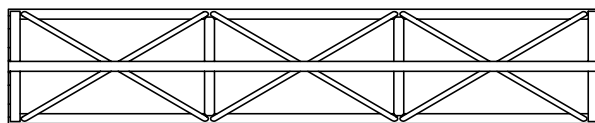
23 1/4" x 60 degree equilateral triangular truss is designed and manufactured for high strength, in relation to storage space required. The main chords are 2" x 0.125" tube and the diagonals are 1" x 0.125" tube in either 6082T6 or 6061T6. The truss can be used with a Ground Support System with appropriate Sleeve Blocks and Towers. Each section is complete with bolts.

PRODUCT CODE	DESCRIPTION	WT lbs
B0500	10' section	66
B0501	8' section	53
B0502	5' section	35
B4500	3m section	66
B4501	2.5m section	53
B4502	2m section	44
B4503	1.5m section	35
B4504	1m section	26.5
B4505	2 way corner block	35
B4506	3 way corner block	39.5
B4507	4 way corner block	44
B4508	Flat pivot section	39.5

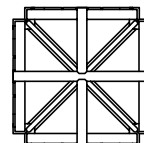


Allowable Load Span feet (meters)	Maximum Allowable Uniform Loads		Maximum Allowable Center Point Loads	
	Loads pounds (kgs)	Maximum deflection inches (mm)	Loads pounds (kgs)	Maximum deflection inches (mm)
10 (3.048)	5600 (2540)+	0.1 (2)	2800 (1270)+	0.1 (2)
15 (4.572)	5600 (2540)+	0.34 (8)	2800 (1270)+	0.34 (8)
20 (6.096)	4700 (2131)	0.70 (17)	2350 (1065)	0.70 (17)
25 (7.62)	3700 (1678)	1.09 (27)	1850 (839)	1.09 (27)
30 (9.144)	3000 (1360)	1.57 (39)	1500 (680)	1.57 (39)
40 (12.192)	2100 (952)	2.8 (71)	1050 (476)	2.8 (71)
50 (15.24)	1300 (589)*	3.75 (95)	650 (294)*	3.75 (95)
60 (18.288)	700 (317)*	4.50 (114)	350 (158)*	4.50 (114)

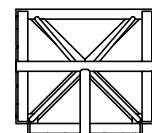
LOADING FIGURES show maximum loads between supports in addition to self weight of truss. Information extracted from structural report by Jessie Mise. + Denotes load limited to suit maximum shear capacity. \*Denotes load limited to a maximum deflection of (span /160). All loads include a 20% overload factor for dynamic effects.



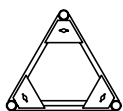
Plan View



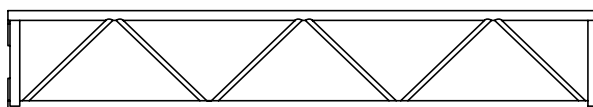
4 Way



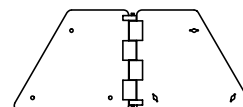
3 Way



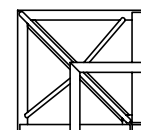
End View



Side View



Flat Pivot Section  
0-180 Degree



2 Way