

20.5" FOLDING SUPERTRUSS

This SuperTruss has been developed for those applications that require good loadbearing capacity and a compact truck pack . The truss ladders are separated at the bottom by folding locking elbows and are hinged at the top with our custom made extrusion. All sections fold flat to a width of 5.25" to take up the smallest amount of space possible. Forty feet of folding truss requires about the same space as a 1 - 10 foot section of 20.5 inch SuperTruss.



Standard lengths and weights

PRODUCT CODE	DESCRIPTION	WT lbs
B3660A	12' of 20.5" Folding SuperTruss	99
B3661	10' of 20.5" Folding SuperTruss	88
B3662	8' of 20.5" Folding SuperTruss	74
B3663	6' of 20.5" Folding SuperTruss	59
B3664	5' of 20.5" Folding SuperTruss	54
B3666	4' of 20.5" Folding SuperTruss	52

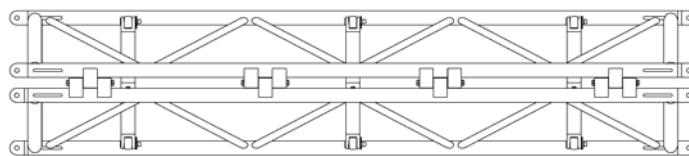
Truss Accessories

PRODUCT CODE	DESCRIPTION	WT lbs
B3605	2 Way Folding SuperTruss square support plate	-
B3603	3 Way Folding SuperTruss joint c/w square support plate	-
B3604	4 Way Folding SuperTruss joint c/w square support plate	-
B3607	Add on caster bars	-
B2609	Folding SuperTruss lifting point	-
B3611	0 - 180° Pivot section	-

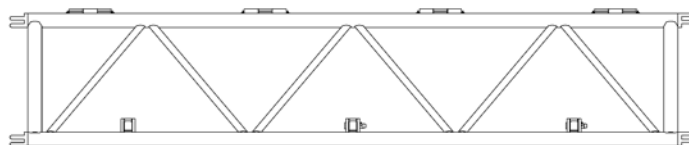
Loading chart

Allowable Load Data Span feet	Maximum Allowable Uniform Loads		Maximum Allowable Center Point Loads	
	Loads pounds	Maximum deflection inches	Loads pounds	Maximum deflection inches
10	6680	0.44	5732	0.59
20	6680	0.44	5732	0.59
30	6609	1.50	3783	1.50
40	4616	2.56	2308	2.56
50	3256	3.70	1629	3.70
60	2050	4.41	1025	4.41
70	1300	5.15	650	5.15
80	798	5.90	399	5.90

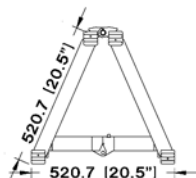
LOADING FIGURES show maximum loads between supports in addition to self weight of truss. Information extracted from structural report by The Broadhurst Partnership. * Denotes load limited to suit maximum shear capacity. All loads include 20% overload factor for dynamic effects.



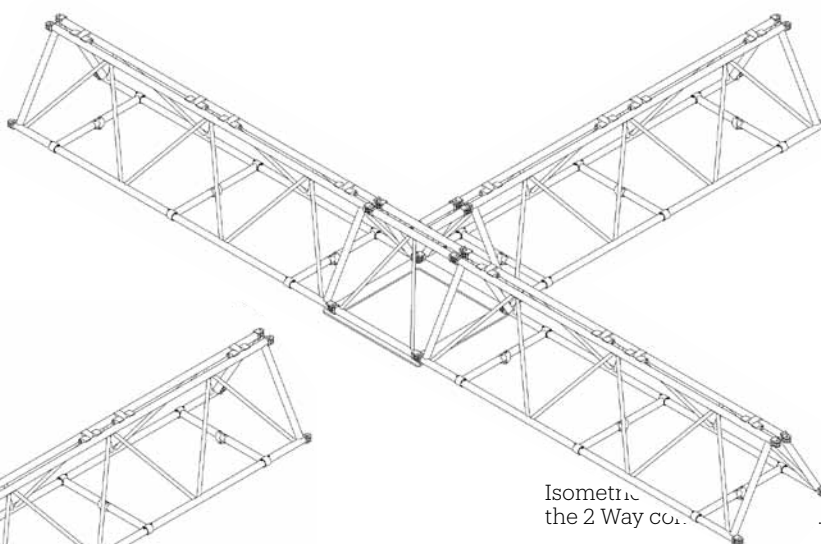
Plan View



Front View



Isometric drawing showing the 3 way corner assembly with square support plate.



Isometric drawing showing the 2 Way corner assembly.

