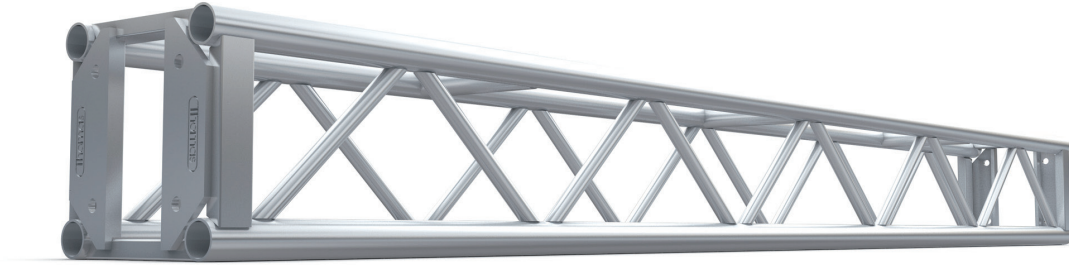


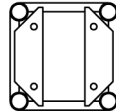
GENERAL PURPOSE TRUSS 12 x 12

12" x 12" General Purpose truss is manufactured from 2" dia x 0.125" wall and 1" dia x 0.125" wall 6082T6 or 6061T6 aluminum tubing. Bolts are supplied for assembly of truss elements. This truss is ideal for conference, exhibition, and small venue work. By incorporating suitable sleeve blocks and towers, this truss can be used with our Ground Support System.

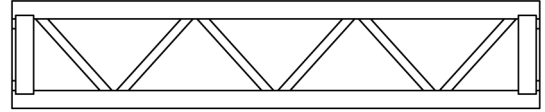


Standard lengths and weights

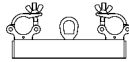
PRODUCT CODE	DESCRIPTION	WT lbs
B0700	10' Section	55
B0701	8' Section	46
B0702	5' Section	35
B0703	2' 6" Section	24



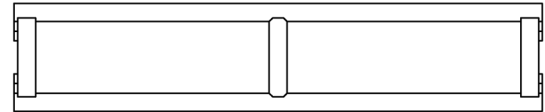
End View



Side View



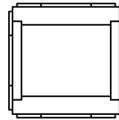
Lifting Point



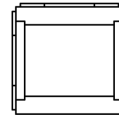
Plan View

Corners

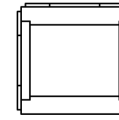
PRODUCT CODE	DESCRIPTION	WT lbs
B4705	2 Way Corner Block	15
B4705A	3 Way Corner Block	17.5
B4706	4 Way Corner Block	19.5
B4706A	5 Way Corner Block	25.9
B4707	6 Way Corner Block	26.5
B4708	Flat Plate Hinge Section	14



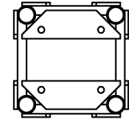
4 Way



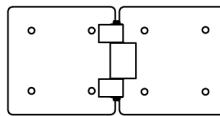
3 Way



2 Way



6 Way



Flat Pivot Section

Loading chart

Allowable Load Data	Maximum Allowable Uniform Loads		Maximum Allowable Center Point Loads	
	Span feet	Loads pounds	Maximum deflection inches	Loads pounds
10	6140	0.276	4497	0.315
20	3100	1.10	1550	1.10
30	1726	2.21	864	2.21
40	855	2.96	428	2.96

LOADING FIGURES show maximum loads between supports in addition to the self weight of the truss. Information extracted from the structural report by Broadhurst, Goodwin, and Dunn for Truss manufactured after November 1993. * denotes load limited to suit maximum shear capacity. All loads include 20% overload factor for dynamic effects.