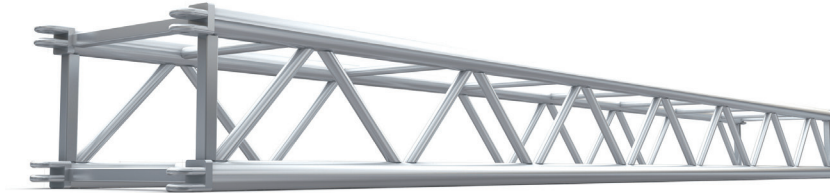


SUPERTRUSS 18 x 12

A revolutionary truss designed to offer all the advantages of the Thomas SuperTruss design in a 12 x 18 layout. This truss has the advantage of being able to accommodate 2 lighting bars back to back. 12 x 18 SuperTruss provides a substantial increase in loadbearing capacity over the GP 18 x 12 truss. It is made from 6061T6 alloy 2" x 0.157" tubes in the main chords and 1" x 0.125" tubes in the diagonals.



Standard lengths and weights

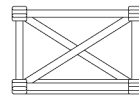
PRODUCT CODE	DESCRIPTION	WT lbs
B2360 R2	12' Section	93
B2361 R2	10' Section	76
B2362 R2	8' Section	64
B2363 R2	6' Section	48
B2364 R2	5' Section	45
B2365 R2	2' 6" Section	20

Truss Accessories

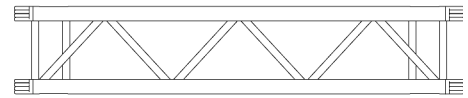
PRODUCT CODE	DESCRIPTION	WT lbs
B2304B	3 Way gate with lifting point	12
B2308	Square support plate	10
B2311	18" x 12" SuperTruss to GP 18" x 12" adapter gate	9
G6671A	12" SuperTruss pin extraction tool	7

Corners

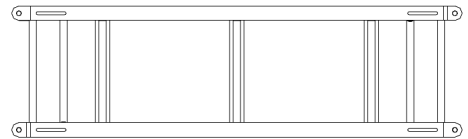
PRODUCT CODE	DESCRIPTION	WT lbs
B2300A	60° corner gate	22
B2301 R2	90° corner gate	9
B1203	135° corner gate	8
B2304A R2	3 Way gate/ 120° gate	9



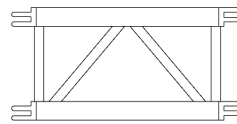
End View



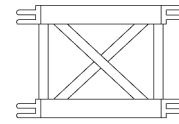
Side View



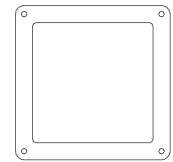
Plan View



90 Degree corner gate



3 Way corner gate



Square support plate

Loading chart

Allowable Load Data Span feet	Maximum Allowable Uniform Loads		Maximum Allowable Center Point Loads	
	Loads pounds	Maximum deflection inches	Loads pounds	Maximum deflection inches
10	8496*	0.20	7348	0.20
20	7255	1.50	3628	1.50
30	3324	2.20	1662	2.20
40	1695	2.95	848	2.95
50	888	3.70	445	3.70

LOADING FIGURES show maximum loads between supports in addition to self weight of truss. Information extracted from structural report by Broadhurst, Goodwin & Dunn for SuperTruss manufactured after November 1993. * Denotes load limited to suit maximum shear capacity. All loads include 20% overload factor for dynamic effects.