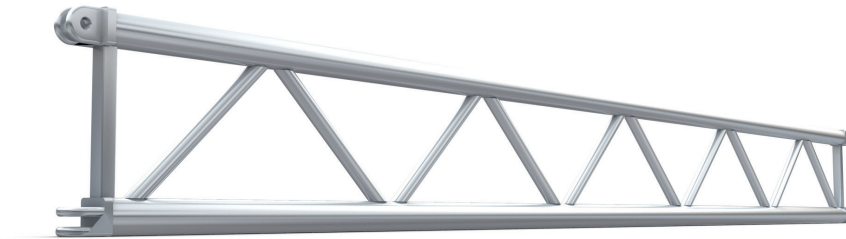


# SUPERTRUSS 12" LADDER

12" SuperTruss ladder is suitable for small loads and added lighting positions. With spigoted ends, loads are carried more efficiently along the truss. Spigots are turned so that runs of truss will not pivot at each connection location. Ladders are easily stacked and stored away when not in use.

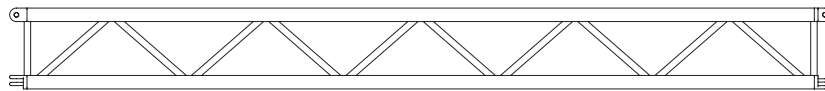


## Standard lengths and weights

PRODUCT CODE	DESCRIPTION	WT lbs
LD12ST120	10' Section	32.21
LD12ST096	8' Section	26.6
LD12ST084	7' Section	24.1
LD12ST072	6' Section	22.6
LD12ST060	5' Section	20.5
LD12ST048	4' Section	17.9
LD12ST024	2' Section	15.07



Plan View



Side View



End View